

## Determination of CMC of cationic tenside in aqueous and mixed water-alcohol solutions

ANDREA GÁLUŠOVÁ, FILS ANDRIAMAINTY, ROMAN MIKLÁŠ

Comenius University in Bratislava, Faculty of Pharmacy, Department of Pharmaceutical Chemistry, Bratislava, Slovak Republic

### Introduction

The critical micelle concentration (CMC) indicates a narrow concentration range in which the creation of aggregates of the so-called micelles occurs. The process of self-assembly of surfactants into micelles is important in many areas from biological systems to technical application<sup>1)</sup>. The studied compound belongs to the group of quaternary ammonium compounds, cationic surfactants, with potentially antimicrobial effect. Short-chain alcohols are organic additives which can act as co-solvents and co-surfactants depending on their concentration in the solution, therefore their influence on CMC may vary<sup>2, 3)</sup>.

The aim of the work was to determine the influence of alcohol on CMC of the substance derived from the derivative of camphoric acid *N,N*-dimethyl-2-oxo-2-(tetradecyloxy)-*N*-{2-[1,8,8-trimethyl-2,4-dioxo-3-azabicyclo[3.2.1]octan-3-yl]ethyl}ethanaminium bromide with the working label 1182-RM-12-14 in aqueous solutions.

### Experimental methods

#### Material and methods

Methanol, ethanol and propanol used in the experiment were obtained from centralCHEM. Pyrene was purchased from Sigma-Aldrich, Switzerland. A spectrophotometer Spekol 1300 Analytic Jena AG (Germany) was used for absorbance measurement.

#### Preparation of pyrene solution

0.0012 mol/l pyrene stock solution was prepared by dissolving the calculated amount of the compound under study in ethanol for UV (99%) and sonicated to clarity. 2  $\mu$ mol/l pyrene solutions of the studied compound were used to prevent excimer formation and were prepared by adding the calculated amount of pyrene stock solution into the aqueous or mixed water-alcohol solution of the studied compound<sup>5)</sup>.

#### Absorbance study

The spectra were recorded in 200–400 nm wavelength. Laboratory temperature throughout the course of experiment

was 25 °C. CMC of compound 1182-RM-12-14 was determined by absorption spectrophotometry with pyrene in UV/VIS region in aqueous; methanol, ethanol and propanol solutions with concentration 0.1 M, 0.2M and 0.5 M. The CMC was determined according to the method of Basu Ray et al.<sup>4)</sup>.

### Results and discussion

The pyrene absorption spectrum shows eight strong (s) and weak (w) peaks at 232<sup>w</sup>, 242<sup>s</sup>, 252<sup>w</sup>, 260<sup>w</sup>, 272<sup>s</sup>, 308<sup>w</sup>, 320<sup>s</sup>, 336<sup>s</sup> nm<sup>6)</sup> (Fig. 1).

In the aqueous solution, pyrene peaks were present at 308, 322 and 336 nm (Fig. 2) and in mixed water-alcohol solutions at 322 and 336 nm (Fig. 3). The rest of the typical pyrene peaks were masked due to strong

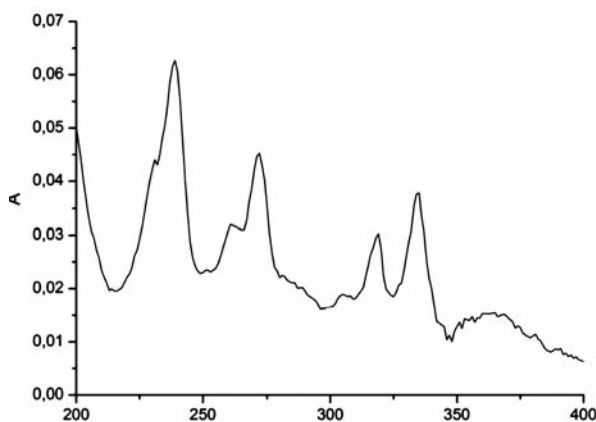


Fig. 1. The absorption spectrum of pyrene (2  $\mu$ mol/l) in aqueous solution at  $t = 22$  °C

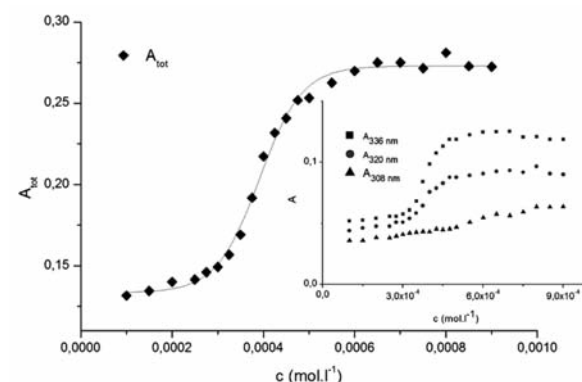


Fig. 2. The dependence of the sum of absorbances of the main pyrene peaks  $A_{tot}$  vs. concentration of studied compound ( $c$ ) 1182-RM-12-14 in water solution  
Inset: Dependence of absorbances ( $A$ ) of pyrene peaks (308 nm, 322 nm a 336 nm) vs. concentration

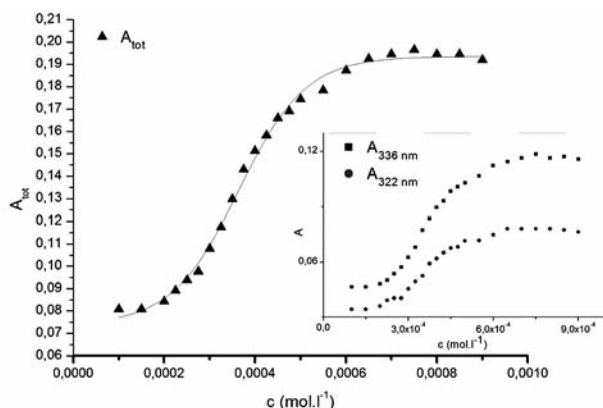


Fig. 3. The dependence of the sum of absorbances of main pyrene peaks  $A_{tot}$  vs. concentration of studied compound ( $c$ ) 1182-RM-12-14 in 0.1M ethanol solution  
Inset: Dependence of absorbances ( $A$ ) of pyrene peaks (322 nm a 336 nm) vs. concentration

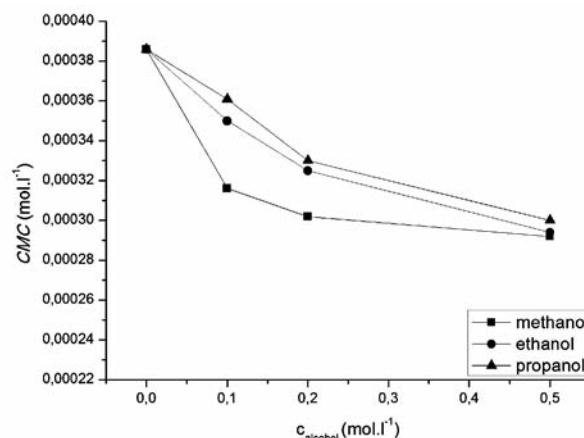


Fig. 4. Dependence of critical micelle concentration of compound 1182-RM-12-14 on methanol, ethanol, propanol concentration

absorption of compound 1182-RM-12-14 in the near UV region.

The pyrene plots of dependence of the sum of absorbances of the unmasked pyrene peaks  $A_{tot}$  versus the tenside concentration (1182-RM-12-14) in the solvent system show a typical sigmoidal shape which was used to determine the CMC by fitting with Sigmoidal-Boltzmann equation [1]:

$$A_{tot} = \frac{(a_i - a_f)}{1 + e^{(x - x_0)/\Delta x}} + a_f \quad [1]$$

where  $x$  is the concentration of the surfactant,  $a_i$  and  $a_f$  are the initial and final asymptotes of the sigmoid,  $x_0$  is the centre of the sigmoid and  $\Delta x$  is the interval of the independent variable  $x$ . The sigmoidal plot shows two potential values of CMC that can be found using equation [1],  $CMC_1$  at  $x_0$  and  $CMC_2$  at  $(x_0 + 2\Delta x)$ . The ratio  $x_0/\Delta x$  is used to determine if CMC is represented by  $CMC_1$  or  $CMC_2$ . If ratio  $(x_0/\Delta x) \Delta 10$ ,  $CMC = CMC_1 = x_0$ , and if  $(x_0/\Delta x) \Delta 10$ ,  $CMC = CMC_2 = (x_0 + 2\Delta x)$ . According to Aguiar et al., our results were analyzed by equation [1].

Ratios  $(x_0/\Delta x)$  for all observed solutions were lower than 10, thus the CMC is represented by  $x_0^{4, 7)}$ . The most significant fitting parameters for the studied systems, CMC and regression-square ( $R^2$ ), are presented in Table 1. Experimental results show that in the studied concentration range, CMC of the studied compound decreases with increasing concentration of alcohol as shown in Figure 4. The CMC was decreased the most by methanol, less by ethanol and the least by propanol. The observed decrease in CMC can be the result of entering the polar area of the micelle by short-chain alcohol molecules, which decreases the electrostatic repelling force between the ionic heads of surfactants in the micelle and results in a decrease in CMC. Therefore, when short-chain alcohols are present in a solution in a low concentration, they behave like co-surfactants. We assume that if the concentration of a mixed water-alcohol solution is higher, we would observe an increase in CMC values due to the fact that in higher concentrations alcohols may self-aggregate, which may disrupt the water structure, dielectric constants of the mixtures decrease, as a result, the electrostatic force of the ionic head groups in micelle increases, which results in an increase of CMC values. In

Table 1. Fitting parameters of the absorption spectra of pyrene to Sigmoidal-Boltzmann equation for investigated compound (1182-RM-12-14)

Solution	Fitting parameters						CMC (mol.l <sup>-1</sup> )
	$a_i$	$a_f$	$x_0$	$\Delta x$	$x_0/\Delta x$	$R^2$	
distilled water	0.13521	0.26544	$3.86 \cdot 10^{-4}$	$4.05 \cdot 10^{-5}$	9.53	0.9953	$3.86 \cdot 10^{-4}$
0.1 M methanol	0.07368	0.14835	$3.16 \cdot 10^{-4}$	$3.39 \cdot 10^{-5}$	9.32	0.9987	$3.16 \cdot 10^{-4}$
0.2 M methanol	0.10358	0.0191	$3.02 \cdot 10^{-4}$	$4.67 \cdot 10^{-5}$	6.47	0.9966	$3.02 \cdot 10^{-4}$
0.5 M methanol	0.10848	0.19202	$2.92 \cdot 10^{-4}$	$6.53 \cdot 10^{-5}$	4.47	0.998	$2.92 \cdot 10^{-4}$
0.1 M ethanol	0.07895	0.17974	$3.50 \cdot 10^{-4}$	$5.44 \cdot 10^{-5}$	6.43	0.9989	$3.50 \cdot 10^{-4}$
0.2 M ethanol	0.12110	0.19528	$3.25 \cdot 10^{-4}$	$3.80 \cdot 10^{-5}$	8.55	0.9974	$3.25 \cdot 10^{-4}$
0.5 M ethanol	0.12695	0.18692	$2.94 \cdot 10^{-4}$	$3.33 \cdot 10^{-5}$	8.83	0.9956	$2.94 \cdot 10^{-4}$
0.1 M propanol	0.09772	0.18847	$3.61 \cdot 10^{-4}$	$4.60 \cdot 10^{-5}$	7.85	0.9927	$3.61 \cdot 10^{-4}$
0.2 M propanol	0.10914	0.19305	$3.30 \cdot 10^{-4}$	$5.59 \cdot 10^{-5}$	5.90	0.9973	$3.30 \cdot 10^{-4}$
0.5 M propanol	0.10513	0.18277	$3.00 \cdot 10^{-4}$	$5.93 \cdot 10^{-5}$	5.06	0.9914	$3.00 \cdot 10^{-4}$

$a_i$ ,  $a_f$  – initial and final asymptotes of the sigmoid;  $x_0$  – centre of the sigmoid;  $\Delta x$  – interval of independent variable  $x$ ;  $R^2$  – regression square; CMC – critical micelle concentration

this second scenario, short-chain alcohols in higher concentrations would act as co-solvents<sup>2,3</sup>).

### Conclusions

In the studied concentration range, our results showed a decrease in *CMC* by the influence of short-chain alcohols, wherein the higher the concentration of alcohol was, the bigger decrease in the critical micelle concentration was observed. The critical micelle concentration was decreased the most by methanol, less by ethanol and the least by propanol.

The work was supported by the grant No. UK/265/2015.

**Conflicts of interest:** none.

### References

1. **Tanford C.** The Hydrophobic Effect: Formulation of Micelles and Biological Membranes. 2nd edition. New York: Wiley-Interscience Publication 1980.
2. **Huang J., Mao M., Zhu B.** The surface physico-chemical properties of surfactants in ethanol-water mixtures. *Colloids and surfaces A: Physicochemical and Engineering aspects* 1999; 155, 339–348.
3. **Bielawska M., Chodzinska A., Janczuk B., Zdziennicka, A.** Determination of CTAB CMC in mixed water + short-chain alcohol solvent by surface tension, conductivity, density and viscosity measurements. *Colloids and Surfaces A: Physicochemical and Engineering aspects* 2013; 424, 81–88.
4. **Basu Ray G., Chakraborty I., Moulik S.** Pyrene absorption can be a convenient method for probing critical micellar concentration (cmc) and indexing micellar polarity. *J. Colloid Interface Sci.* 2006; 294, 248–254.
5. **Kalyansundaram K., Thomas J. K.** Environmental effects on vibronic band intensities in pyrene monomer fluorescence and their application in studies of micellar systems. *J. Am. Chem. Soc.* 1977; 99, 2039–2044.
6. **Khan Z. H., Hhanna B. N.** Electronic absorption spectra of pyrene and its monocationic ion. *J. Chem. Phys.* 1973; 59, 3015.
7. **Aguiar J., Carpena P., Molina-Bolivar J., Carmero Ruiz C.** On the determination of the critical micelle concentration by the pyrene 1:3 ratio method. *J. Colloid Interface Sci.* 2003; 258, 116–122.